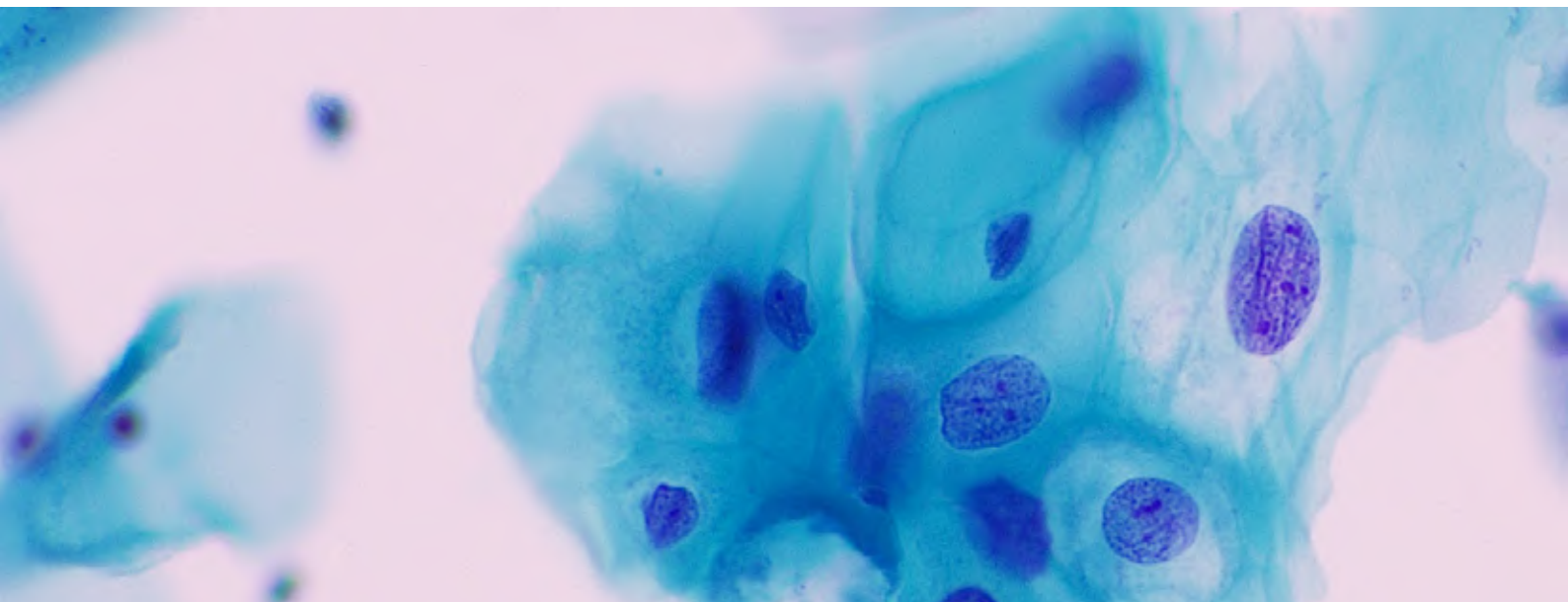


LIQUID-BASED PREPARATION SYSTEM





LBP-2524 Automatic Sample Processor

The LBP automatic sample processor is designed for the pre-processing of cervical cells and sputum specimens.

It adopts a touch-screen operating system and a high precision optical positioning system, which provides an accurate motion control for sample batch transferring and centrifugation.

NMPA

Features



Highly Automatic

Fully automatic operation from batch processing, transferring, centrifuging to separation



Intelligent

Microcomputer control/
Accurate centrifuge positioning/
Customized centrifuge program



Efficient

24 samples/25 minutes



Safe

Automatic waste-liquid removal/
Disposable consumables

Parameters

Throughput	1-24 samples/batch
Processing time	24 samples/25 minutes
Transfer volume	8mL
Mixed times	8 times
Tip position	24
Pipette position	24
Centrifuge tube position	24
Certificates	NMPA

LBP-2212

Liquid based cytology Production Machine

LBP-2212 is an automatic machine for preparing pathological cytology slides as well as staining. Based on the principle of liquid based cytology, LBP-2212 can process 1 to 12 samples at the same time within half an hour. It is more suitable for hospital and laboratory with small test volume.

CE NMPA



Features



Turnable design

Utilization of centrifugal force to discharge waste liquid



Automatic

Automatic slide preparation and staining

Consumable list

Hematoxylin stain solution	Centrifuge tube	Transfer tips	Filter
Adhesion microscope slide	Settling chamber	Buffer solution	Coverslip
EA/ORANGE-G Combo STAIN	Preservative fluid	Cervical brush	Soft pipette



Parameters

Principle	Sedimentation
Sample type	Cervical cells, sputum cells, serosal cavity effusion cells, needle aspiration cell, endoscopic cell, etc
Throughput	1-12 samples/batch
Processing time	30 minutes for 12 samples
Dimension	640mmX412mmX680mm (L, W, H)
Weight	65kg
Certificates	CE, NMPA



LBP-2848

All-In-One Specimen Slicing & Staining Unit

The All-In-One (AIO) Specimen Slicing & Staining Unit is a highly automated machine for slide preparation and staining of cell smears before pathological analysis. By adopting the advanced technology of sedimentation liquid-based cytology, LBP-2848 can process 1 to 48 samples within 50 minutes.

NMPA

Features



High throughput

48 samples/batch



Efficient

4 pipettes working at the same time



Intelligent

Touch-screen monitor/
Timing start/One-button
cleaning



Reliable

Disposable tips and
dripping style staining
design to avoid blockage

Consumable list

Hematoxylin stain solution	Centrifuge tube	Transfer tips	Coverslip
Adhesion microscope slide	Settling chamber	Buffer solution	Extracting solution
EA/ORANGE-G Combo STAIN	Preservative fluid	Cervical brush	



Parameters

Principle	Sedimentation
Sample type	Cervical cells, sputum cells, serosal cavity effusion cells, needle aspiration cell, endoscopic cell, etc
Throughput	1-48 samples/batch
Processing time	50 minutes for 48 samples
Dimension	1200mmX700mmX660mm (L, W, H)
Weight	100kg
Certificates	NMPA

Workflow

Specimen collection

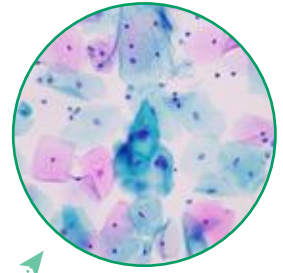


Centrifugation

LBP-2524

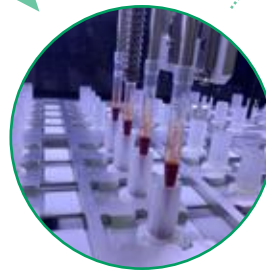


View under a microscope



Sample preparation

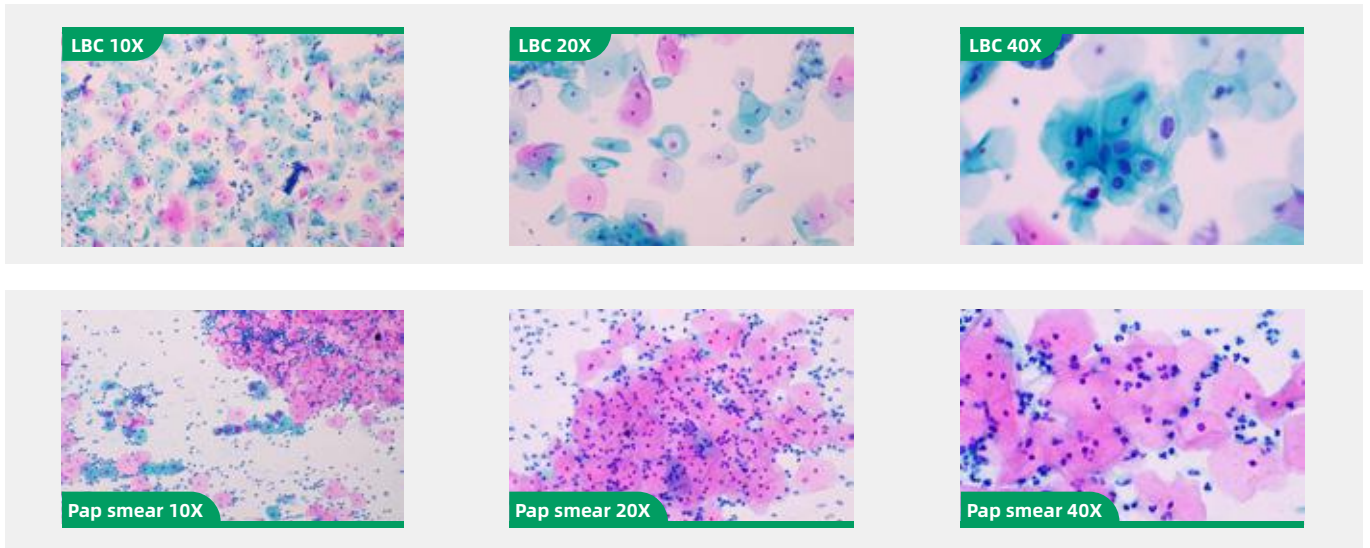
LBP-2524



Slide staining

LBP-2212/2848

Comparison between LBC slides and conventional Pap smear



Advantages of LBC slides

100%

100% of cells

Detachable heads cervical brushes ensure that the intact cells arrive at the lab



Cell enrichment

Remove interfering materials, transferring only the most diagnostically relevant material to the slide

3D

3D cellular structure

Maintain 3D structure of the cells



Independent staining

Independent dripping style staining to avoid cross contamination



<https://en.daangene.com/>

CHINA (Headquarters)

Da An Gene Co., Ltd of Sun Yat-sen University
Address: No.19, Xiangshan Road, Science Park,
High & New Technology Development District,
Guangzhou, Guangdong, P.R. China
Tel.: +86-20-32068126
Fax: +86-20-32068352
Email: marketing@daangene.com

USA office

Da An Vision Inc.
Add.: 6725 Mesa Ridge Road, San Diego, CA 92121
Tel.: +1 8584125583
Email: gbai@daangene.net

CANADA office

Add.: #200-505 Kingsway, Burnby, B.C.,
Canada,V5H 4H2
Fax: +604451.7587
Tel.: +1604 451 7588
Email: gbai@daangene.net