

✓ Precise ✓ Stable ✓ Reliable



Lava96

Real-time PCR Detection System

CE

NMPA

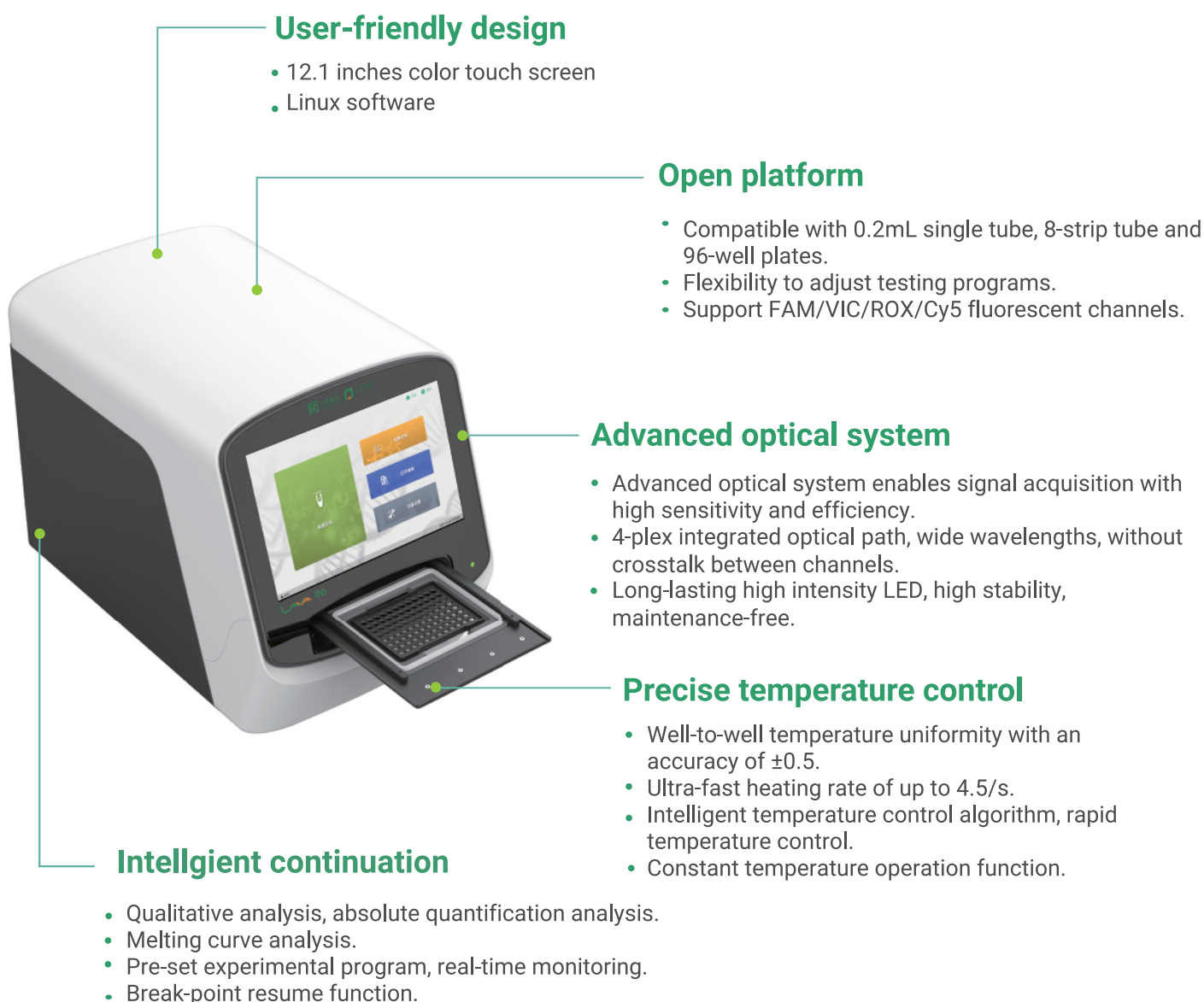
Model: DA8120

Lava96

Lava96 Real-time PCR Detection System is based on real-time fluorescent PCR technology and is used together with Daan's reagents to perform qualitative and quantitative detection of target nucleic acids (DNA/RNA) in samples.

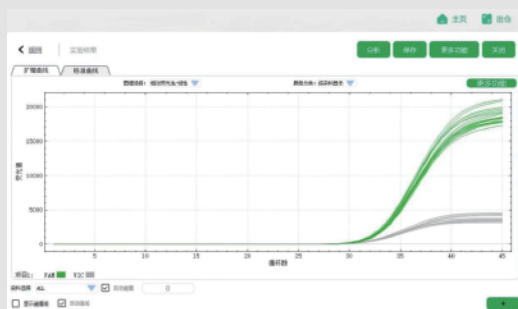
It combines advanced optical system with precise temperature control to provide stable, reliable analysis of 1 to 96 samples.

Features



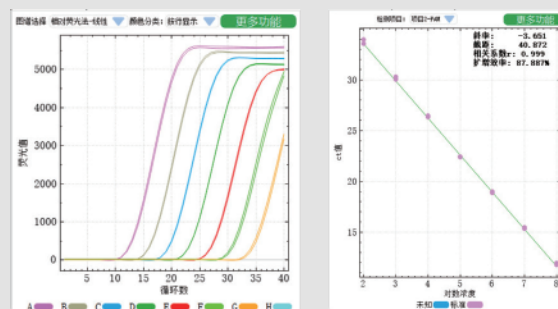
Excellent repeatability ensures stable and reliable results

Positive control substance, the concentration is 10^3 IU/mL, qPCR analysis after sample extraction, CV<3%.



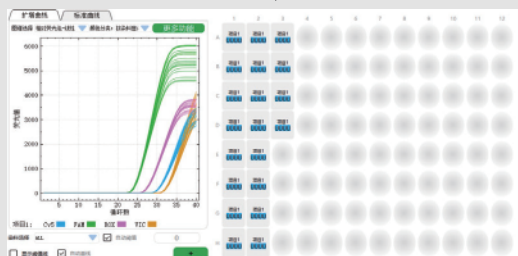
Excellent linear range for accurate quantitation

HBV reference substance, the dilution concentration is 10^2 - 10^8 IU/mL, after extraction, $R^2 > 0.999$.



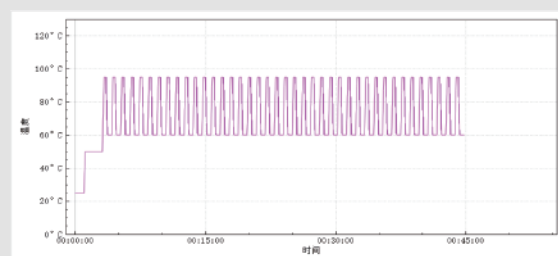
Excellent multi-color fluorescence detection to ensure multiple data requirements

Positive quality control, 4-plex detection without crosstalk between channels, CV<3%.



Precise temperature control capability, excellent uniformity and stability

Real-time and precise temperature control according to different programs.



Parameters

General information

Test principle

Real-time fluorescent PCR technology

Throughput

1-96 samples

Reaction volume

5~100μL

Fluorescence dyes

F1: FAM, SYBR GREEN

F2: VIC, HEX, JOE, TET

F3: TEXAS-Red/ROX

F4: CY5

Applicable consumables

0.2mL single tube, 8-strip tube and 96-well plates

Performance

Sensitivity

1 copy

Sample detection repeatability

CV≤3%

Fluorescence detection precision

CV≤5%

Thermal cycle system	
Heating and cooling method	Peltier
Lid range	Room temperature to 110°C
Heating rate	≥4.5°C/s
Cooling rate	≥3.0°C/s
Temperature range	0-100°C
Temperature uniformity	±0.5°C

Optical system	
Excitation light source	LED
Detector	Photodiode
ROX correction	No need
Filters	Excitation wavelengths(nm): 465, 525, 571, 638;Emission wavelengths(nm): 510, 564, 612, 685

Software	
Operating system	Linux
Display	12.1 inches color touch screen
Inter-connection	Bidirectional LIS connection
Storage	Over 10000 files
Function	Qualitative analysis, Absolute quantification analysis, Melting curve analysis Custom settings editor, Pre-stored experimental program, Real time monitoring, Abnormal alarm

Working conditions	
Operating environment	Temperature: 10°C-30°C, Relative Humidity: ≤70°C
Atmospheric pressure	85.0kPa~106.0kPa
Power supply	AC220V 50Hz
Input Power	1500VA
Communication interface	RS232, RJ45, USB
Dimension(L×W×H)	337mm× 534mm × 398mm
Weight	28.9 kg

Daan Gene Co., Ltd.

CHINA (Headquarters)

⑧ Add: No.19, Xiangshan Road, Science Park, High & New Technology
 Development District, Guangzhou, Guangdong, P.R. China
 ☎ Tel.: +86-20-32290789-5225
 ☎ Fax: +86-20-32068352
 ✉ Email: marketing@daangene.com

CANADA office

⑧ Add.: #413-4538 Kingsway, Burnaby, BC V5H 4T9, Canada
 ☎ Tel.: +16044517588
 ☎ Fax: +604451.7587
 ✉ Email: gbai@daangene.net

COLOMBIA office

⑧ Add.: Cl 93 No.16 46 of 702, Bogotá D.C.
 ☎ Tel.: +57 3103940417
 ✉ Email: alonso.zheng@daangene.net

⑧ Website: <https://en.daangene.com/>

